

4

3

2

1

B

B

A

A

УКАЗАТЕЛЬ ДОКУМЕНТОВ

СПИСОК ЧЕРТЕЖЕЙ/ВЕРСИЯ	155921-0	A
БЛОК - СХЕМА	155921-1	A
ПОЛЕВОЙ БЛОК	155921-2	A
МОНТАЖ ПОЛЕВОГО БЛОКА	155921-3	A
ГАЗОВАЯ СХЕМА	155921-4	A
СХЕМА ВНЕШНИХ ПОДКЛЮЧЕНИЙ	155921-5	A

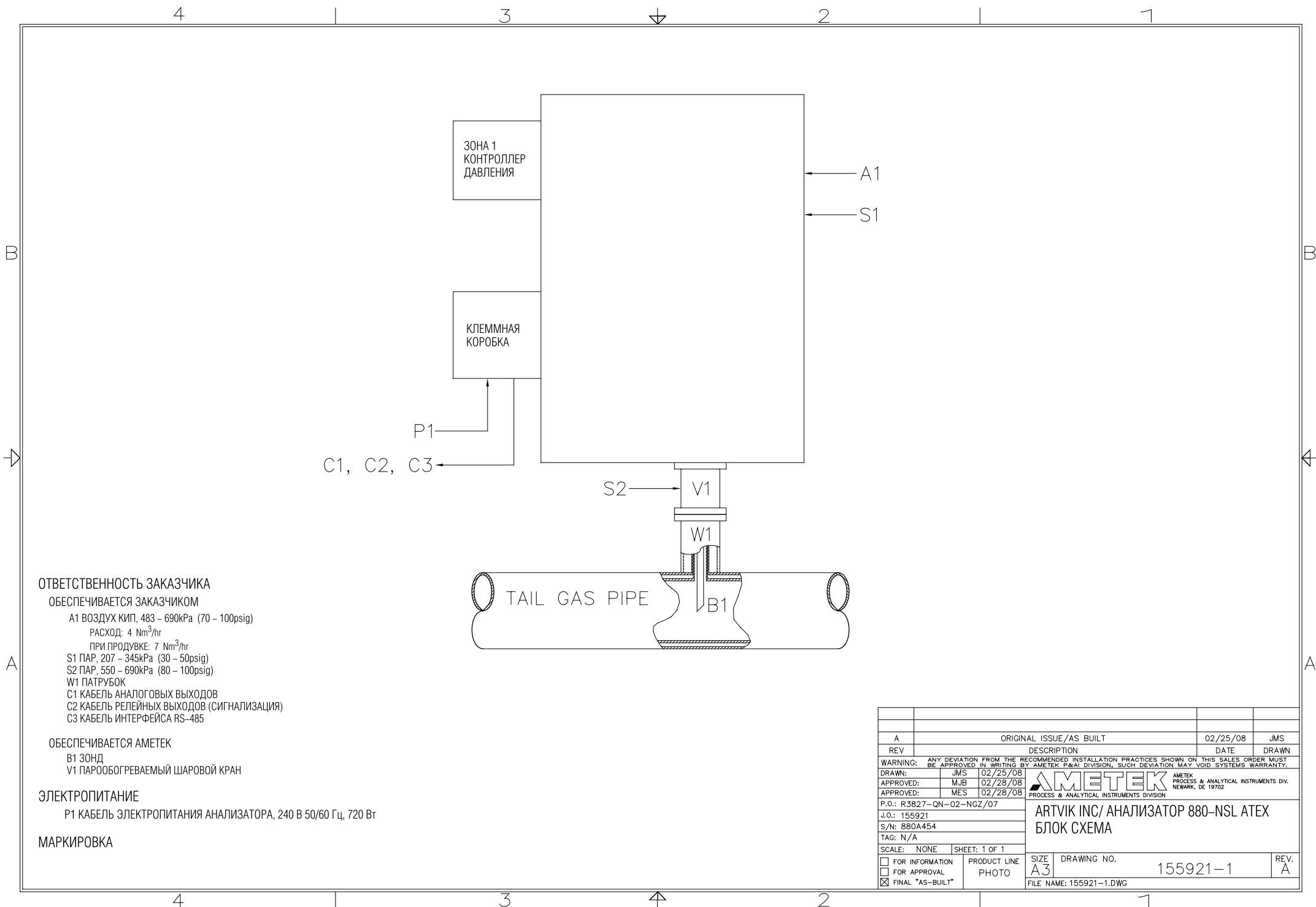
A		ORIGINAL ISSUE/AS BUILT		02/25/08	JMS
REV	DESCRIPTION			DATE	DRAWN
<small>WARNING: ANY DEVIATION FROM THE RECOMMENDED INSTALLATION PRACTICES SHOWN ON THIS SALES ORDER MUST BE APPROVED IN WRITING BY AMETEK P&AI DIVISION. SUCH DEVIATION MAY VOID SYSTEMS WARRANTY.</small>					
DRAWN:	JMS	02/25/08	 AMETEK <small>PROCESS & ANALYTICAL INSTRUMENTS DIV. NEWARK, DE 19702</small>		
APPROVED:	MJB	02/28/08			
APPROVED:	MES	02/28/08	ARTVIK INC/ АНАЛИЗАТОР 880-NSL ATEX УКАЗАТЕЛЬ ДОКУМЕНТОВ		
P.O.: R3827-QN-02-NGZ/07					
J.O.: 155921					
S/N: 880A454					
TAG: N/A					
SCALE:	NONE	SHEET:	1 OF 1		
<input type="checkbox"/> FOR INFORMATION	PRODUCT LINE		SIZE	DRAWING NO.	REV.
<input type="checkbox"/> FOR APPROVAL	PHOTO		A3	155921-0	A
<input checked="" type="checkbox"/> FINAL "AS-BUILT"	FILE NAME: 155921-0.DWG				

4

3

2

1



ОТВЕТСТВЕННОСТЬ ЗАКАЗЧИКА

ОБЕСПЕЧИВАЕТСЯ ЗАКАЗЧИКОМ

A1 ВОЗДУХ КИП, 483 – 690kPa (70 – 100psig)

РАСХОД: 4 Nm³/hr

ПРИ ПРОДУВКЕ: 7 Nm³/hr

S1 ПАР, 207 – 345kPa (30 – 50psig)

S2 ПАР, 550 – 690kPa (80 – 100psig)

W1 ПАТРУБОК

C1 КАБЕЛЬ АНАЛОГОВЫХ ВЫХОДОВ

C2 КАБЕЛЬ РЕЛЕЙНЫХ ВЫХОДОВ (СИГНАЛИЗАЦИЯ)

C3 КАБЕЛЬ ИНТЕРФЕЙСА RS-485

ОБЕСПЕЧИВАЕТСЯ АМЕТЕК

B1 ЗОНД

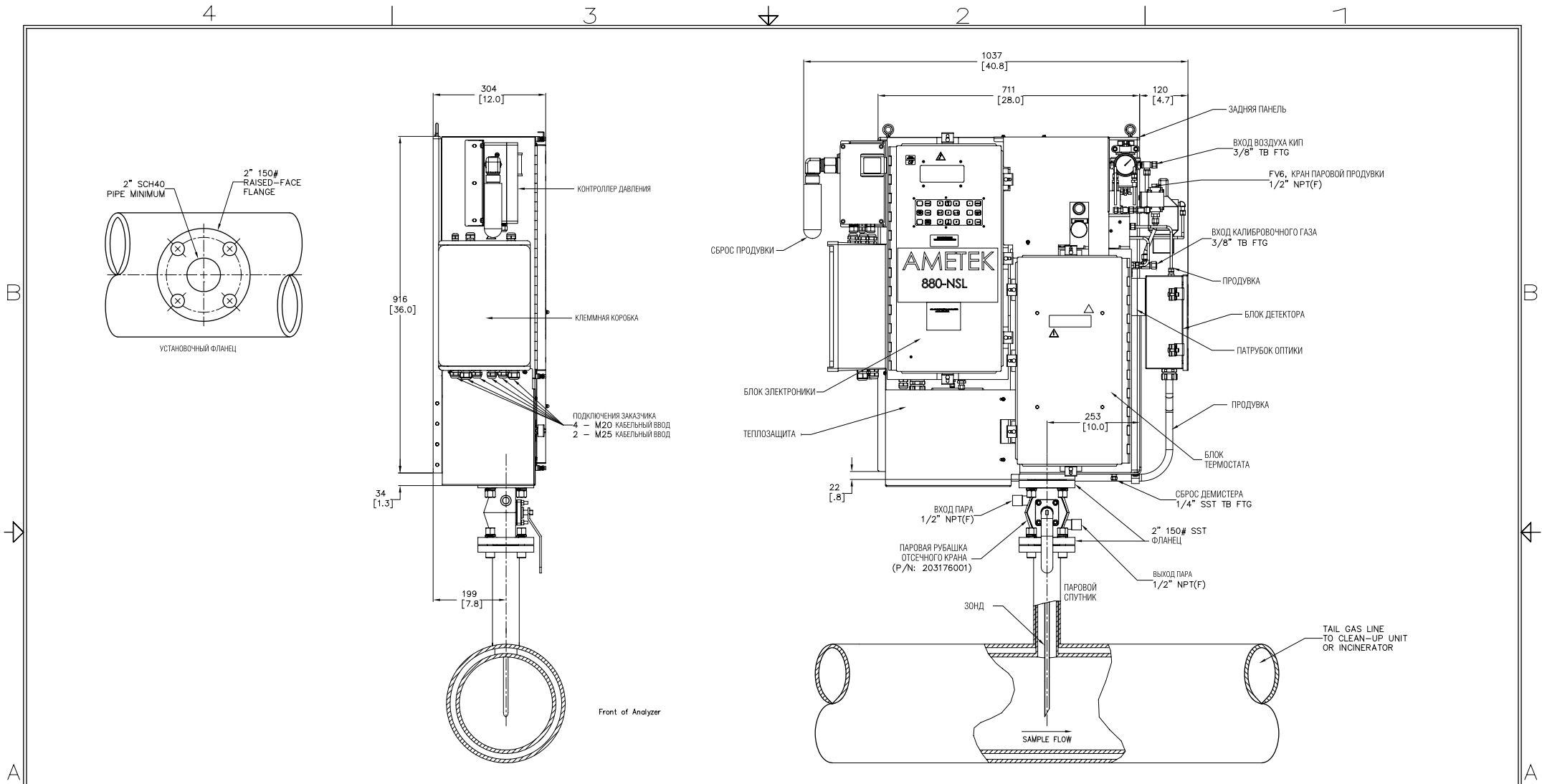
V1 ПАРООБОГРЕВАЕМЫЙ ШАРОВОЙ КРАН

ЭЛЕКТРОПИТАНИЕ

P1 КАБЕЛЬ ЭЛЕКТРОПИТАНИЯ АНАЛИЗАТОРА, 240 В 50/60 Гц, 720 Вт

МАРКИРОВКА

A		ORIGINAL ISSUE/AS BUILT		02/25/08	JMS
REV	DESCRIPTION			DATE	DRAWN
<small>WARNING: ANY DEVIATION FROM THE RECOMMENDED INSTALLATION PRACTICES SHOWN ON THIS SALES ORDER MUST BE APPROVED IN WRITING BY AMETEK P&A DIVISION, SUCH DEVIATION MAY VOID SYSTEMS WARRANTY.</small>					
DRAWN:	JMS	02/25/08	 <small>AMETEK PROCESS & ANALYTICAL INSTRUMENTS DIV. NEWARK, DE 19702</small>		
APPROVED:	MJB	02/28/08			
APPROVED:	MES	02/28/08			
P.O.: R3827-QN-02-NGZ/07					
J.O.: 155921					
S/N: 880A454					
TAG: N/A					
SCALE: NONE		SHEET: 1 OF 1			
<input type="checkbox"/> FOR INFORMATION	PRODUCT LINE PHOTO		SIZE A3	DRAWING NO. 155921-1	REV. A
<input type="checkbox"/> FOR APPROVAL			FILE NAME: 155921-1.DWG		
<input checked="" type="checkbox"/> FINAL "AS-BUILT"					



NOTES:

- WARNING: BEWARE OF TOXIC GAS WHEN INSTALLING OR REMOVING THE PROBE; USE APPROPRIATE PERSONAL PROTECTIVE EQUIPMENT (PPE).
- XXX DIMENSIONS ARE mm, [XXX] DIMENSIONS ARE INCHES.
- MINIMUM CLEARANCE IN FRONT OF ANALYZER IS 304mm [12.00"]
- APPROX WEIGHT: 115kg, (250lbs).
- ENCLOSURES ARE NEMA 3R (IP 42), 316 SST.
- POWER CONSUMPTION: 0.7kVA MAX, ALL WORLDWIDE POWER SUPPLIES.
- INSTRUMENT QUALITY AIR ONLY: 483-690kPa (70-100psig)
CONSUMPTION: NORMAL OPERATION - 4m³/hr
- STEAM: BALL VALVE JACKET - 515-690kPa (75-100psig)
BLOWBACK - 207-345kPa (30-50psig)
- ELECTRICAL CLASSIFICATION: ATEX ZONE 1, EEx pmde [ib] IIC, T3

A		ORIGINAL ISSUE/AS BUILT		02/25/08	JMS
REV	DESCRIPTION			DATE	DRAWN
WARNING: ANY DEVIATION FROM THE RECOMMENDED INSTALLATION PRACTICES SHOWN ON THIS SALES ORDER MUST BE APPROVED IN WRITING BY AMETEK R&A DIVISION, SUCH DEVIATION MAY VOID SYSTEMS WARRANTY.					
DRAWN:	JMS	02/25/08	AMETEK PROCESS & ANALYTICAL INSTRUMENTS DIV. NEWARK, DE 19702		
APPROVED:	MJB	02/28/08			
APPROVED:	MES	02/28/08			
P.O.: R3827-QN-02-NGZ/07					
J.O.: 155921					
S/N: 880A454					
TAG: N/A					
SCALE: NONE		SHEET: 1 OF 1			
<input type="checkbox"/> FOR INFORMATION <input type="checkbox"/> FOR APPROVAL <input checked="" type="checkbox"/> FINAL "AS-BUILT"		PRODUCT LINE PHOTO		SIZE A3	DRAWING NO. 155921-2
FILE NAME: 155921-2.DWG				REV. A	

4

3

2

1

B

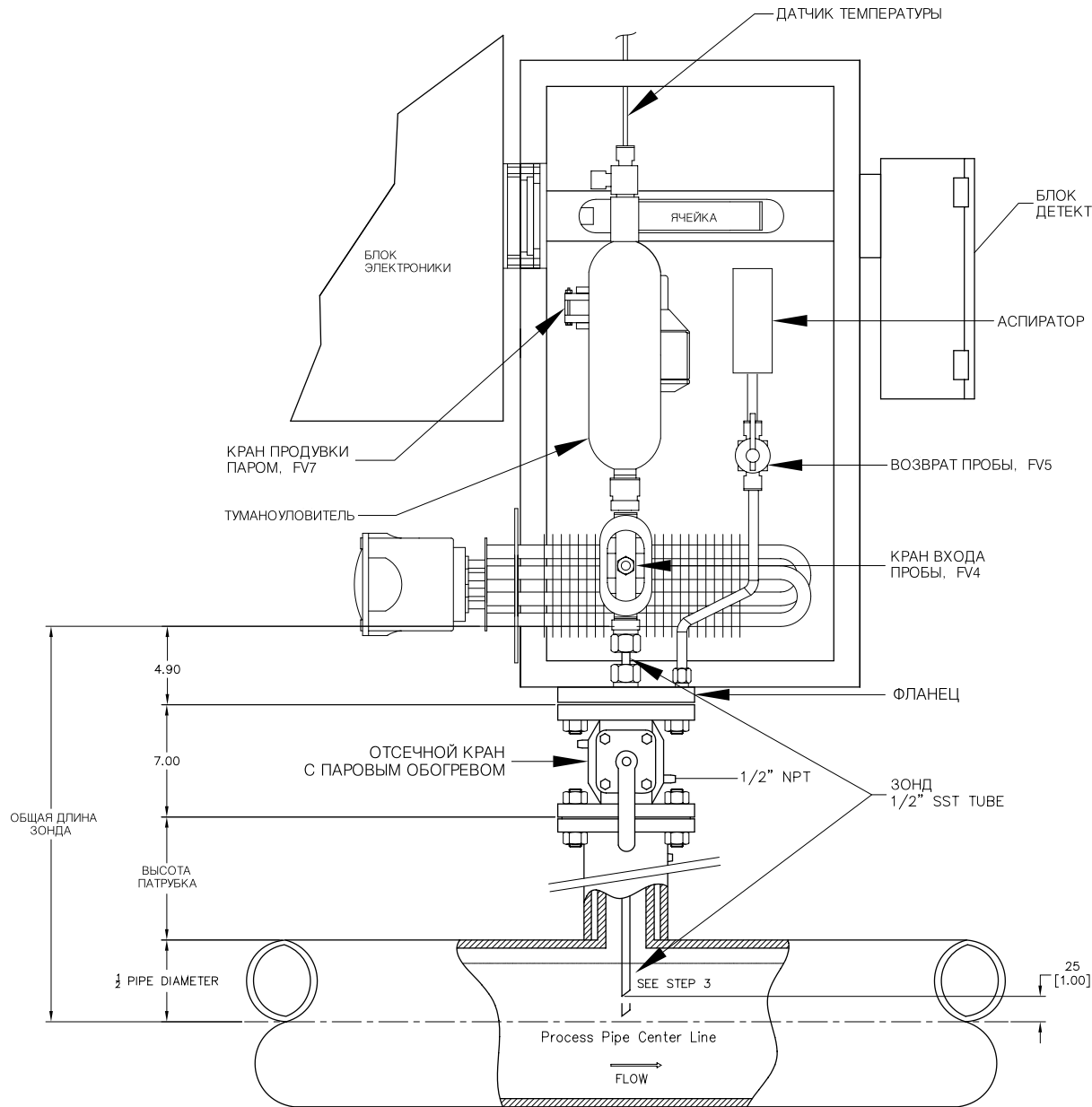
B

A

A

A

A



ASSEMBLY STEP 1

USING THE DIMENSIONS SUPPLIED, CALCULATE THE TOTAL PROBE LENGTH. CUT THE SUPPLIED TUBE TO LENGTH, MEASURING FROM THE ANGLE END.

ASSEMBLY STEP 2

REMOVE RTD FROM CELL OVEN ENCLOSURE AND DISCONNECT FV4 FROM DEMISTER.

ASSEMBLY STEP 3

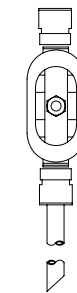
AFTER CUTTING THE PROBE TO LENGTH, INSERT THE PROBE INTO FV4. (NOTE: THE TIP OF THE PROBE WILL BE INSTALLED UPSTREAM) TIGHTEN THE TUBE FITTING.

ASSEMBLY STEP 4

BE CERTAIN THAT FV4, FV5, AND THE MAIN SAMPLE VALVE ARE CLOSED. INSERT THE PROBE THROUGH THE FLANGE UNTIL THE PROBE MAKES CONTACT WITH THE BALL VALVE; BACK THE PROBE OUT 1/2 INCH AND ETCH A MARK ON THE TOP OF THE FLANGE TUBE FITTING. OPEN MAIN SAMPLE VALVE SLIGHTLY. CHECK FOR LEAKS. PROCEED WITH OPENING THE VALVE. INSERT THE PROBE COMPLETELY INTO THE PROCESS AND TIGHTEN THE FLANGE TUBE FITTING. RE-ASSEMBLE DEMISTER ASSEMBLY, RTD, AND TUBES PER FLOW DIAGRAM. WARNING: BEWARE OF TOXIC GAS WHEN INSTALLING OR REMOVING THE PROBE, USE APPROPRIATE PERSONAL PROTECTIVE EQUIPMENT (PPE).

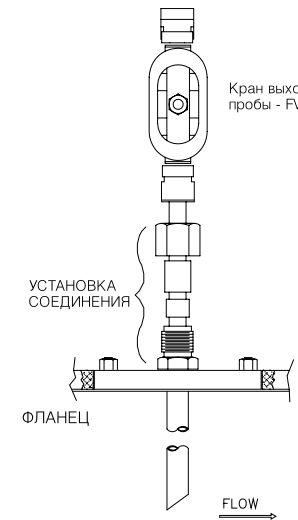
PROBE REMOVAL

TO REMOVE PROBE: WITHDRAW PROBE TO THE ETCHED MARK THAT WAS MADE WHEN PROBE WAS INSTALLED. SHUT-OFF THE MAIN PROCESS VALVE.



КРАН ВХОДА ПРОБЫ - FV4

FLOW



Кран выхода пробы - FV4

УСТАНОВКА СОЕДИНЕНИЯ

ФЛАНЕЦ

FLOW

A		ORIGINAL ISSUE/AS BUILT		02/25/08	JMS
REV		DESCRIPTION		DATE	DRAWN
WARNING: ANY DEVIATION FROM THE RECOMMENDED INSTALLATION PRACTICES SHOWN ON THIS SALES ORDER MUST BE APPROVED IN WRITING BY AMETEK R&A DIVISION, SUCH DEVIATION MAY VOID SYSTEMS WARRANTY.					
DRAWN:	JMS	02/25/08	AMETEK PROCESS & ANALYTICAL INSTRUMENTS DIV. NEWARK, DE 19702		
APPROVED:	MJB	02/28/08			
APPROVED:	MES	02/28/08			
P.O.: R3827-QN-02-NGZ/07					
J.O.: 155921					
S/N: 880A454					
TAG: N/A					
SCALE: NONE		SHEET: 1 OF 1			
<input type="checkbox"/> FOR INFORMATION <input type="checkbox"/> FOR APPROVAL <input checked="" type="checkbox"/> FINAL "AS-BUILT"		PRODUCT LINE PHOTO		SIZE A3	DRAWING NO. 155921-3
FILE NAME: 155921-3.DWG				REV. A	

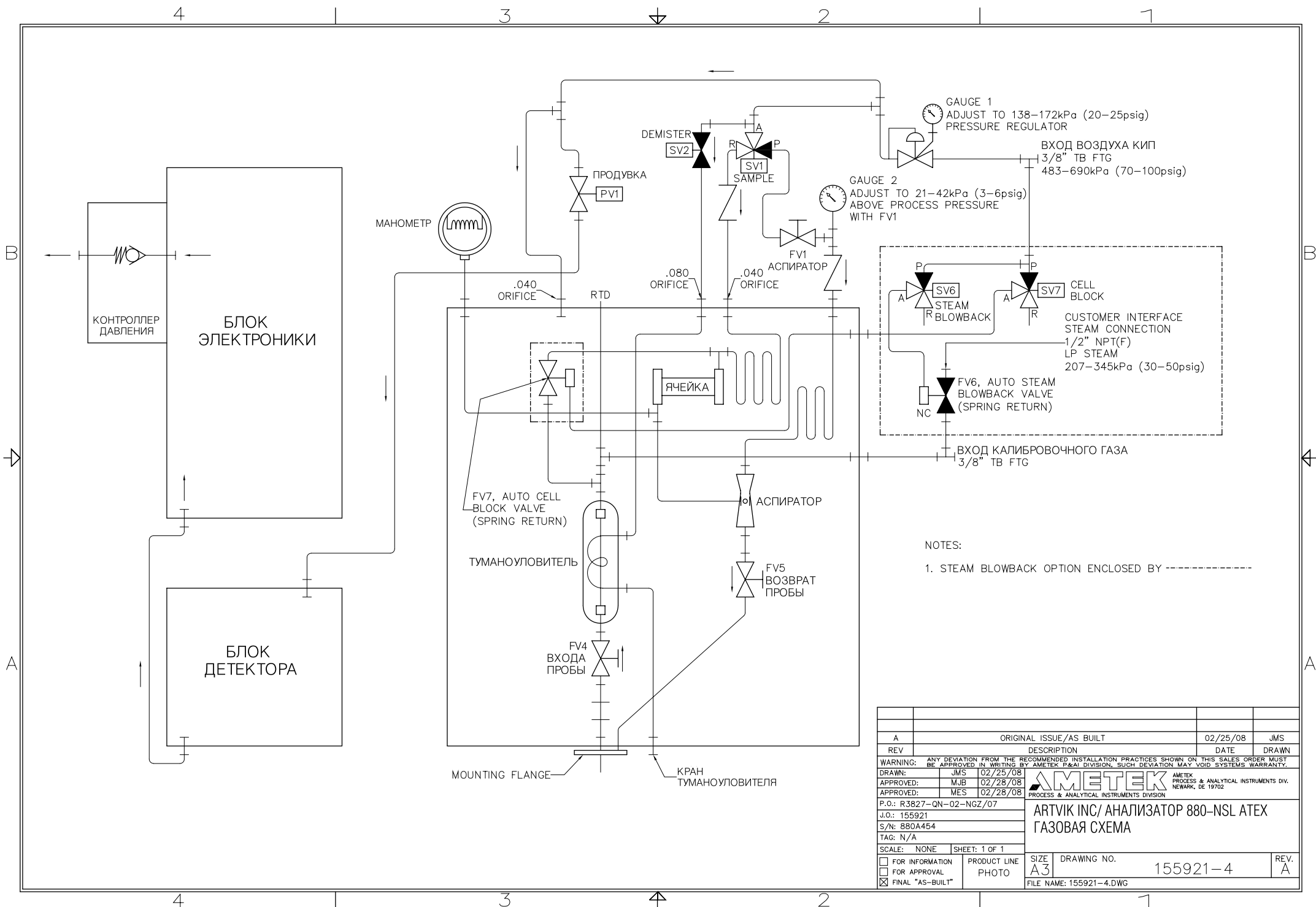
4

3

2

1

A



NOTES:
 1. STEAM BLOWBACK OPTION ENCLOSED BY -----

A		ORIGINAL ISSUE/AS BUILT		02/25/08	JMS
REV		DESCRIPTION		DATE	DRAWN
<small>WARNING: ANY DEVIATION FROM THE RECOMMENDED INSTALLATION PRACTICES SHOWN ON THIS SALES ORDER MUST BE APPROVED IN WRITING BY AMETEK R&A DIVISION, SUCH DEVIATION MAY VOID SYSTEMS WARRANTY.</small>					
DRAWN:	JMS	02/25/08	 AMETEK PROCESS & ANALYTICAL INSTRUMENTS DIV. NEWARK, DE 19702		
APPROVED:	MJB	02/28/08			
APPROVED:	MES	02/28/08			
P.O.: R3827-QN-02-NGZ/07 J.O.: 155921 S/N: 880A454 TAG: N/A					
SCALE: NONE			SHEET: 1 OF 1		
<input type="checkbox"/> FOR INFORMATION <input type="checkbox"/> FOR APPROVAL <input checked="" type="checkbox"/> FINAL "AS-BUILT"		PRODUCT LINE PHOTO	SIZE A3	DRAWING NO. 155921-4	REV. A
FILE NAME: 155921-4.DWG					

4

3

2

1

B

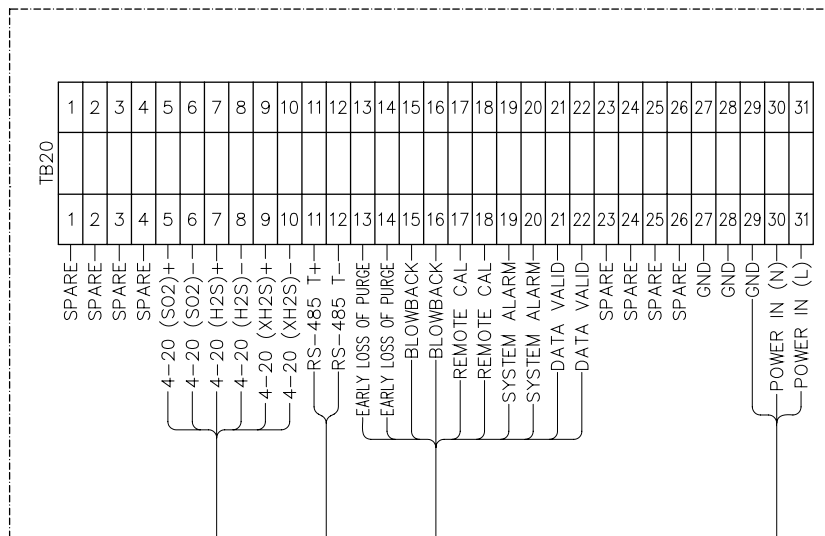
A

A

B

A

A



C1. КАБЕЛЬ АНАЛОГОВЫХ ВЫХОДОВ
3 PAIR, TWISTED 0.34mm² (22AWG), SHLD
SEE NOTES 3, 4, 5 & 7

C3. КАБЕЛЬ ИНТЕРФЕЙСА RS - 485
1 PAIR, TWISTED 0.34mm² (22AWG), SHLD
SEE NOTES 3, 4, 5 & 7

C2. КАБЕЛЬ РЕЛЕЙНЫХ ВЫХОДОВ
10 WIRE, 0.34mm² (22AWG), SHLD
SEE NOTES 3, 4, 5 & 7

P1. ЭЛЕКТРОПИТАНИЕ АНАЛИЗАТОРА
3 WIRE, 2.5mm² (14AWG)
240VAC, 50/60Hz, 720W
SEE NOTES 1, 2, 3, 6 & 7

ВНЕШНИЕ ПОДКЛЮЧЕНИЯ
4 - M20 КАБЕЛЬНЫЙ ВВОД
2 - M25 КАБЕЛЬНЫЙ ВВОД

NOTES:

1. WARNING: BEFORE APPLYING POWER, VERIFY VOLTAGE REQUIREMENTS. POWER APPLIED TO INCORRECT TERMINALS CAN DAMAGE EQUIPMENT OR CREATE A SAFETY HAZARD.
2. MAIN POWER DISCONNECT SWITCH SUPPLIED BY CUSTOMER.
3. CABLES ARE TO BE SUPPLIED AND INSTALLED BY CUSTOMER, UNLESS OTHERWISE SPECIFIED ON SALES ORDER.
4. 100% FOIL (ARMOR CAN BE SUBSTITUTED) IS REQUIRED.
5. TERMINATE BOTH ENDS OF SHIELDS OR AS REQUIRED BY LOCAL STANDARDS OR REQUIREMENTS.
6. POWER STATED IS ACTUAL LOAD FOR CIRCUIT. SIZE CIRCUIT BREAKER, DISCONNECT SWITCH, AND WIRE GAUGE ACCORDING TO NEC OR LOCAL CODES FOR CUSTOMER SPECIFIC INSTALLATION.
7. WIRE SIZE REFLECTS MINIMUM REQUIRED.

A		ORIGINAL ISSUE/AS BUILT		02/25/08	JMS
REV	DESCRIPTION			DATE	DRAWN
WARNING: ANY DEVIATION FROM THE RECOMMENDED INSTALLATION PRACTICES SHOWN ON THIS SALES ORDER MUST BE APPROVED IN WRITING BY AMETEK P&AI DIVISION, SUCH DEVIATION MAY VOID SYSTEMS WARRANTY.					
DRAWN:	JMS	02/25/08	AMETEK PROCESS & ANALYTICAL INSTRUMENTS DIV. NEWARK, DE 19702		
APPROVED:	MJB	02/28/08	ARTVIK INC/ АНАЛИЗАТОР 880-NSL ATEX		
APPROVED:	MES	02/28/08	СХЕМА ВНЕШНИХ ПОДКЛЮЧЕНИЙ		
P.O.: R3827-QN-02-NGZ/07					
J.O.: 155921					
S/N: 880A454					
TAG: N/A					
SCALE:	NONE	SHEET: 1 OF 1			
<input type="checkbox"/> FOR INFORMATION	PRODUCT LINE		SIZE	DRAWING NO.	REV.
<input type="checkbox"/> FOR APPROVAL	PHOTO		A3	155921-5	A
<input checked="" type="checkbox"/> FINAL "AS-BUILT"	FILE NAME: 155921-5.DWG				

4

3

2

1